



FRIENDS OF
CLAPHAM
COMMON

AGM
12th February 2025



Friends of Clapham Common

AGM 12th February 2025 - Agenda

- Welcome. Introducing our Trustees - Shirley Kermer
- Statutory and Financial Review - Mike Kermer
 - Quorum
 - Approval of Minutes of AGM dd 8th November 2023
 - Financial Performance
- The Year in Review - Shirley Kermer
- Wetlands and Reed beds Project - Joel Ashton
- AOB



Your Trustees

As governed by CIO constitution

- CIO registered on 26 July 2022 - effective date for appointed trustee terms
- Board comprises up to 12 trustees, of which 4 can be appointed and remaining 8 must be elected by members. There are currently 8 trustees:

Trustee	Status	Term	Term Expiry
Shirley Kermer (Chair)	Appointed	3 years	26 July 2027
Ed Allnutt	Appointed	3 years	26 July 2027
Margot de Dominicis	Appointed	3 years	26 July 2027
Gareth James	Appointed	3 years	26 July 2025
Harriet Hall	Elected	3 years	8 November 2026
Emma de Cassan	Elected	3 years	8 November 2026
Samantha Walker	Elected	3 years	8 November 2026
Michiel Kermer (Treasurer)	Elected	3 years	8 November 2026



**FRIENDS OF
CLAPHAM
COMMON**

**Statutory and Financial Review
Mike Kermer- Trustee and Treasurer**



Statutory Matters

- **Quorum**
- **Approval of Minutes of AGM dated 8th November 2023**
 - Documented presentation material
 - Members elected 4 trustees for 3 year terms
 - Some discussion about new Wetplay area
 - No matters arising



A Professional Organisation

- **Emphasis on good governance**

- Modern Constitution (CIO dd 26/07/22)
- Long serving trustees with broad skill set
- Policies & Procedures in place for Safeguarding / Conflicts of Interest / ED&I / Data Privacy / Complaints / Health & Safety
- Trustee Annual Report & Financial Statements subject to Independent Examination

- **Financially sound**

- Regular income from subscriptions with growing membership
- High level of support from donors for major undertakings
- Collaborative approach to ambitious programmes
- Sufficient reserves to maintain momentum



Financial Review: Trend FY22-25

	FY22 Actual	FY23 Actual	FY24 Actual	FY25 Forecast	Comment
Funds Raised - core	£21.8	£16.5	£13.6	£20.6	
Funds Raised - projects	£43.5	£20.6	£22.1	£185.5	Legal / Wild Clapham / Wetland
Event income	£5.2	£17.9	£24.3	£9.0	No pumpkin patch FY25
Core expenditure	£16.9	£12.2	£10.0	£7.0	Planting & maintenance
Projects	£25.7	£9.9	£79.9	£200.7	Wetland FY25
CIO costs	-	£3.0	-	-	One off legal fees
Overheads	£3.6	£5.8	£4.4	£4.0	
Surplus / Deficit	£24.3	£24.1	-£34.3	£3.4k	
General Reserves	£20.7	£32.0	£38.7	£13.0k	Contribution to Wetland project FY25



Financial Review: Focus on FY24

Income

	Total	Core	Wetland	Legal Fund	Comment
Donations	£25,778	£3,678	£2,000	£20,100	Tracked by cause
Memorial Trees	£1,970	£1,970	-	-	Contributions to cost
Members Subs	£7,920	£7,920	-	-	518 subscribers representing 757 members
Grants	-	-	-	-	
Events	£41,194	£34,178		£7,016	Mainly Summer Party for Wild Clapham
Total	£76,862	£47,746	£2,000	£27,116	



Financial Review: Focus on FY24

Expenditure & Summary Result

	Total	Core	Wetland	Legal Fund	Comment
Income	£76,862	£47,746	£2,000	£27,116	
Planting	£10,053	£10,053	-	-	Trees & hedges
Wetland	£8,668	-	£8,668	-	Design & Planning fees
Legal Fund	£71,277	-	-	£71,277	Legal fees
Events	£16,838	£14,719	-	£2,119	Summer Party for Legal Fund
Overheads	£4,367	£4,367	-	-	
Total Expenditure	£111,203	£29,139	£8,668	£73,396	
Surplus / (Loss) for year	-£34,341	£18,607	-£6,668	-£46,280	
Core		£19,077			Allows us to build reserves
Wild Clapham		-£470			Deducted from reserve and transferred in F25



Financial Review: Focus on FY24/25

Review of Major Appeals closed and opened

	Closed	On Going	
	Legal Fund	Wetland	
	Actuals	Forecast	Comment
Funds Raised - Donations	£66.5k	£52.5k	High level of support
Grants / PIL pledged	-	£134.9k	A first for FCC
Expenditure - to complete	£79.0k	£211.6k	-
Surplus / Deficit	-£12.5k	-£24.2k	
Transfer from General Reserves	£12.5k	£38.7k	FCC funding
Balance as at 31/03/24	Nil	N/A	

Trustees review project forecast and resolve to commit reserves by way of funding

Trustees resolved to retain a minimum of £2,000 in general fund to support ongoing activities



Financial Review: Focus on FY24

Balance Sheet - Reserves and Cash balances

		Designated		Funds	
	General Fund	Wild Clapham	Legal Fund	Wetland	Total Reserves
As at 31/03/23	£32,030	£3,347	£33,826	-	£69,203
Transfer to Legal Fund	-£12,454	-	£12,454	-	-
Surplus / Loss 2024	£19,077	-£470	-£46,280	-£6,668	-£34,341
As at 31/03/24	£38,653	£2,877	NIL	-£6,668	£34,862
Working Capital					£1,451
Cash balance as at 31/03/24					£36,313

Unspent Designated Funds can be applied to funding other activities within the Charity's objectives

Trustees resolved to retain a minimum of £2,000 in general fund to support ongoing activities



FRIENDS OF CLAPHAM COMMON

The Year in Review
Shirley Kermer - Chair

Transformation of Clapham Common



Designated Local Nature Reserves in Clapham Common

Local Nature Reserves highlighted in red



Tree Planting remains a core activity



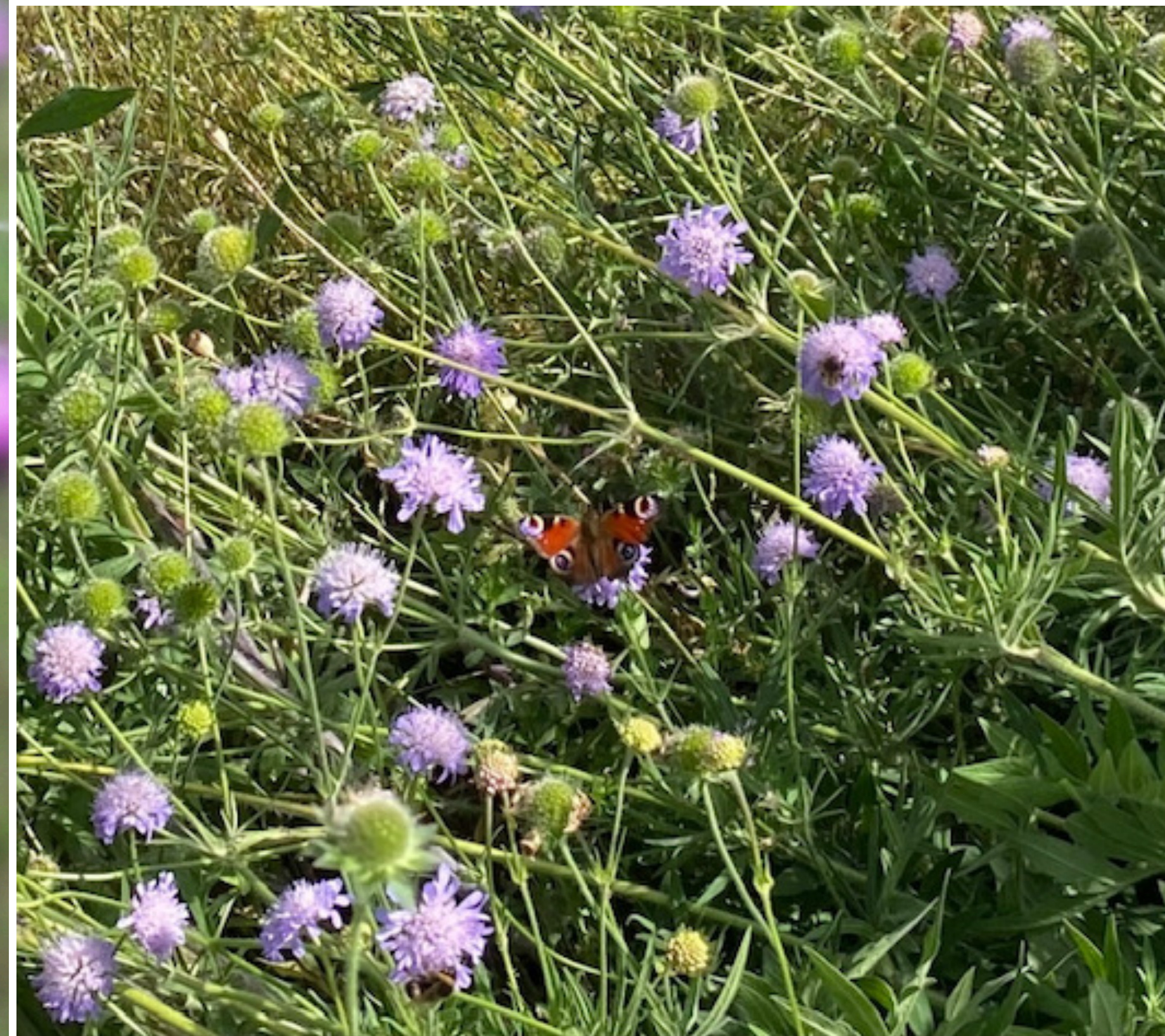
Scrub Islands becoming established



Wildflower Meadows

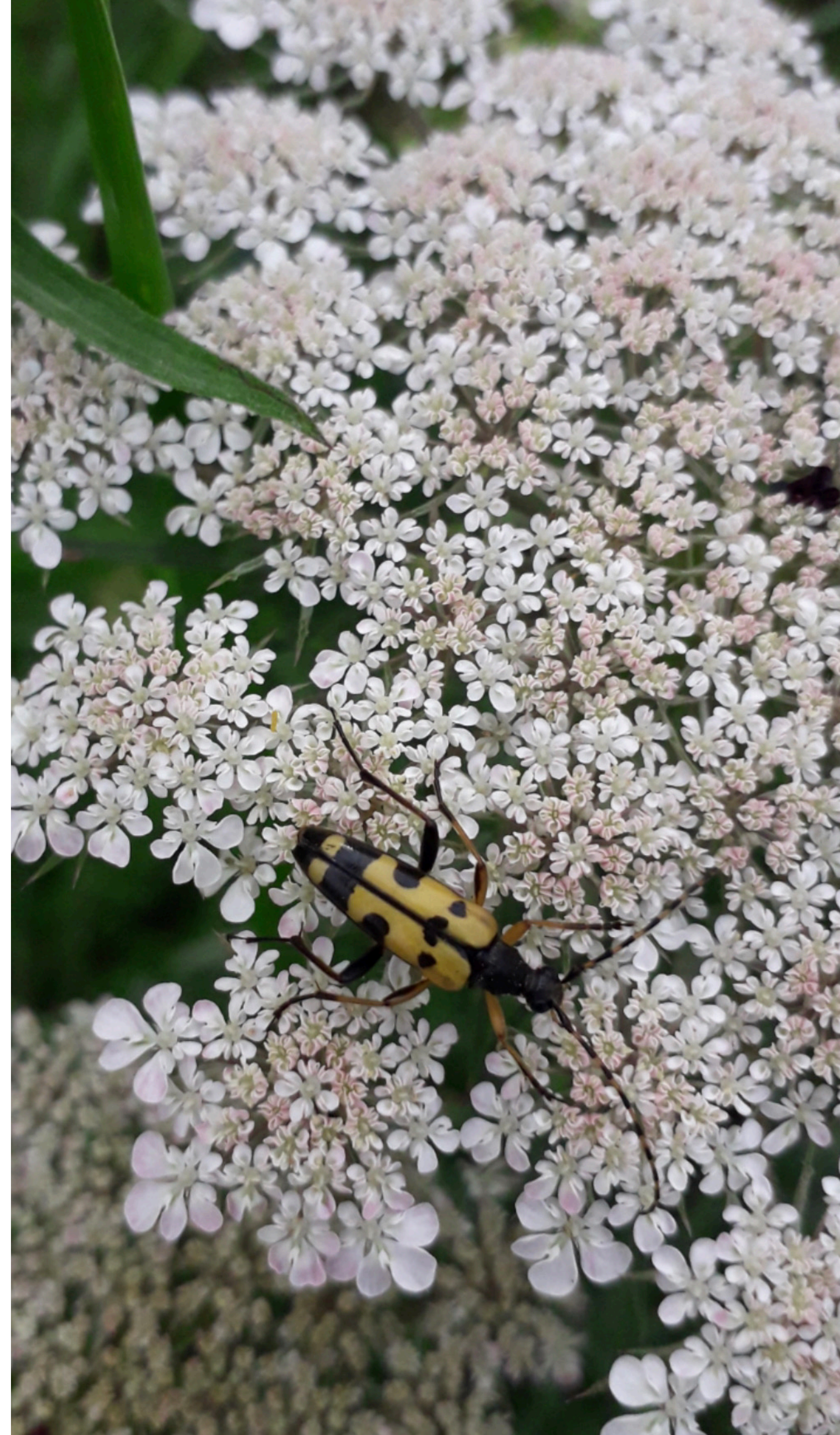
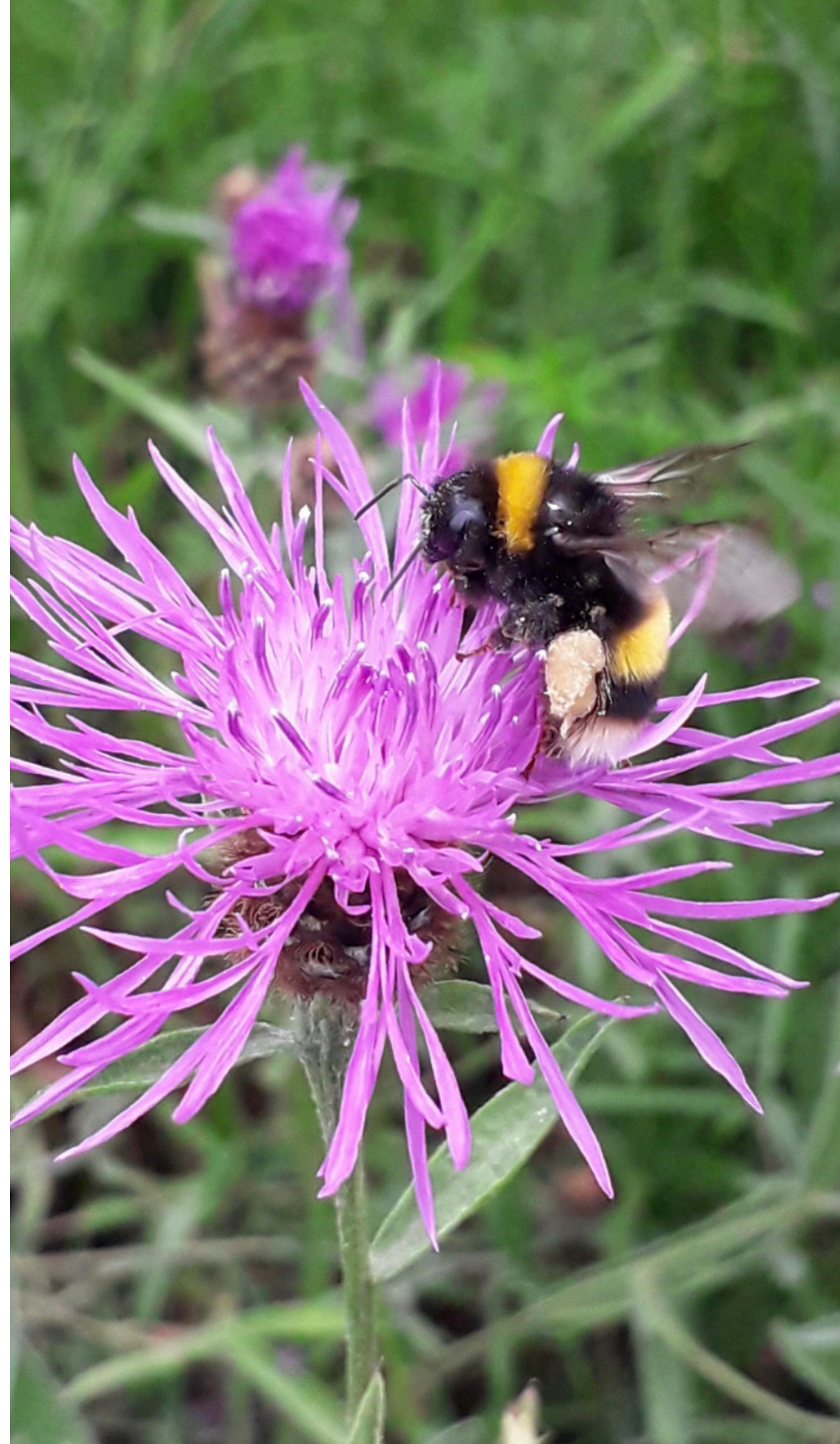


Vibrant Insect Life



Peacock butterfly on the scabious on the common (and two bumblebees)











Brown hairstreak



Female

Hedge Planting



Community Initiatives - Litter Picking



Community Initiatives - Mulching & Watering



Community Initiatives - Our Duke of Edinburgh Award students



Community Initiatives - Family Fun Events



Community Initiatives - Support for local charities



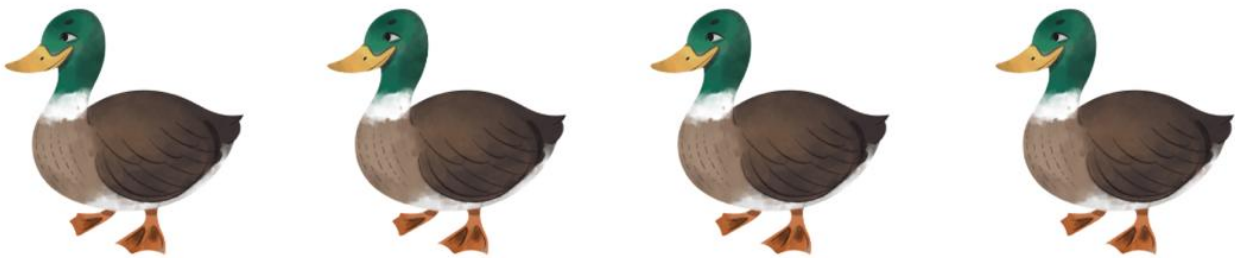
Duck & Goose Food



**Duck Food
Sold Here**
ONLY £1.00



Thank you for feeding our
ducks and geese with
nutritious food





Looking Ahead: Events

- **No large scale music events in last few years (Friends campaign played a role)**
- **Maintain vigilance** : Strike a balance between revenue generation for Lambeth and potential negative impact on the Common
- Friends will keep members updated

Looking Ahead: Projects

Restoration of Rose Arbor on Westside



Looking Ahead: Projects

Visual representation of the proposed wetland





FRIENDS OF
CLAPHAM
COMMON

The Wetland and Reed beds Project
Joel Ashton



FRIENDS OF
CLAPHAM
COMMON

AOB
Questions